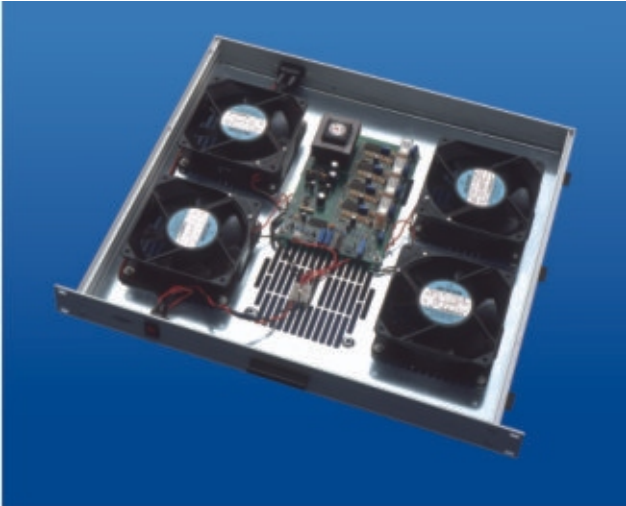


ELECTRONIC Accessories



Monitored Fan Tray

Monitored Fan Tray Ⓐ

A new concept in fan trays, this unit is designed to automatically control the operation of four cooling fans. Built-in temperature sensors provide an accurate measurement of temperature inside the cabinet. Selective and need-based switching energizes only the required number of fans to maintain the temperature level. The "set point" can be factory adjusted according to individual specifications. This prevents over-heating inside the cabinet and makes for smooth operation of data storage and communication equipment. It enhances the life of the fans, cuts down on noise and reduces the load on the power supply or UPS system.

Ordering Information

Fan Tray, Monitored, 1U, 4-Fan	86-1843
--------------------------------	---------



Fire Alarm Unit

Fire Alarm Unit Ⓐ

The fire alarm unit monitors the rack for smoke or fumes. It sounds an alarm and cuts off power to the rack when it detects the presence of either. The unit can be mounted below the exhaust fans located in the top cover so as to continuously monitor the exhaust air.

Ordering Information

Fire Alarm Unit with 1 Smoke Detector	FAU-001
Fire Alarm Unit with 2 Smoke Detectors	FAU-002



Alphanumeric Display Unit 19" W, LEDs

Alphanumeric Display Unit Ⓐ

The Alphanumeric Display Unit is a universal display facility which can be programmed through a standard 104-key PC keyboard. This microprocessor based messaging unit can be used for the identification of racks or cabinets, or for general indication purposes.

Ordering Information

Alphanumeric Disp, 19"W, 18 Char	86-1545
----------------------------------	---------



Temperature Sensor



Temperature Indicator - Multi-Zone ⒸY ⒸX

This is a 3 character digital temperature indicator. The Display Unit is embedded in the front door. The unit has inputs for three temperature sensors which can be located in different zones in the cabinet. The display scrolls at 5 second intervals between the three and has a resolution of one decimal place.

Ordering Information

Temp Indicator, 3 Input	86-1891
-------------------------	---------

Electronic Locking System - with Access Log (CX)

The Keypad is embedded on the front door and the Controller is fixed to the underside of the top cover. The new Controller incorporates a Hooter that sounds an alarm in case invalid accesses are attempted. The Access Controller maintains a log of the 500 most recent accesses. The data for these 500 accesses is maintained in a memory that is a part of the Control Unit within the cabinet and can be downloaded to a PC via a RS 232 port.

Ordering Information

Digital Lock, + Access Log	86-1865
----------------------------	---------



Digital Lock, Access Log

Keypad Digital Lock (CY) (CX)

This unit denies access to any device or control panel by unauthorized personnel. A pre-specified and unique four or five digit code is programmed into the padlock. The correct entry of the code energizes the solenoid lock that releases the door. A wrong entry will display an alarm LED and sound an alarm siren. The access code can be changed by a simple procedure, whenever required. A multiple-user option allows many operators, each with his unique access code, to operate the panel. The Keypad Lock assures protection against unauthorized access.

Ordering Information

Keypad Digital Lock Kit	86-1842
-------------------------	---------



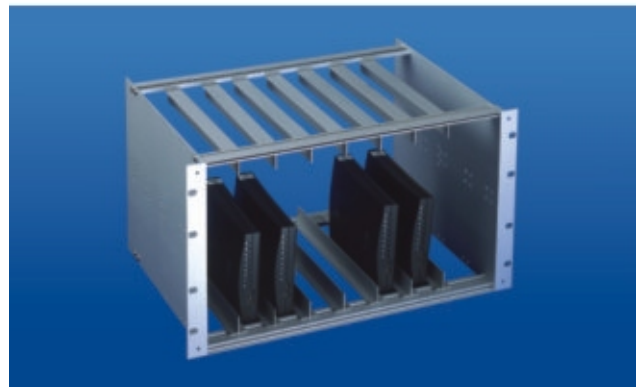
Key Pad Lock

Modem Rack (A)

Modem racks are used to house up to 8 standard modems. They are available in heights of 6U and 7U, with a standard depth of 300mm.

Ordering Information

Modem, Rack 6U/ 84T/ 300mm	20-7630-M
Modem, Rack 7U/ 84T/ 300mm	20-7730-M



Modem Rack