

# SERIES - 42

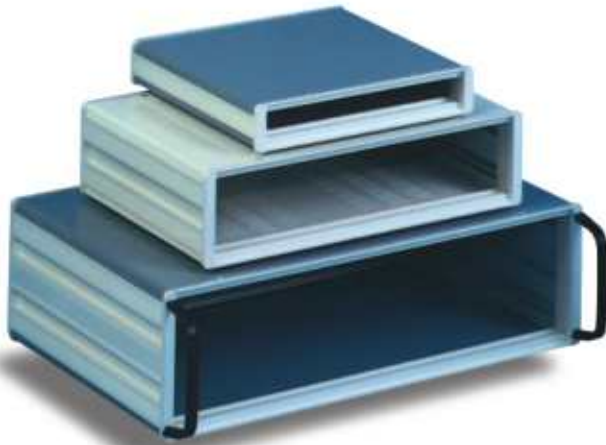
ECONOMY INSTRUMENT CASES

The Series 42 family of Instrument Cases has been designed as an economical packaging solution for bench-top equipment. The rounded edges provide a soft look in keeping with current enclosure styling.

These cases are made from proprietary aluminium extrusions. They are available in a choice of four heights, four widths and four depths. Other customer options are Pull-Out Handles, Screw-On Front Panels, Rack-mount side angles for use in 19" enclosures, ventilation slots, and a choice of colour shades for covers.

All parts are manufactured using high precision dies and tooling. This ensures complete inter-changeability of parts, rigidity of the frame and precision of the assembly. The Cases are normally supplied in kits and can be assembled in a matter of minutes. The exact enclosure to meet a particular application can be put together with a minimum of effort.

The use of this modular family of Instrument Cases frees the electronics engineer from the task of designing enclosures and having them fabricated in small quantities. This results in a reduction of the product development time and ensures that even one-off units look as professional as the best.



*A few of the sizes available are seen here*



*Some of the accessories available*



*Extruded side panel adds strength & good looks*



*Ideal for Rack Mount Modems*

## Features

- All aluminium construction
- High quality natural anodised finish for the frames
- Rounded edges - no sharp corners
- Aluminium Panels with different colour shades
- Rear Panel standard on all models
- Total inter-changeability of parts

## Sizes

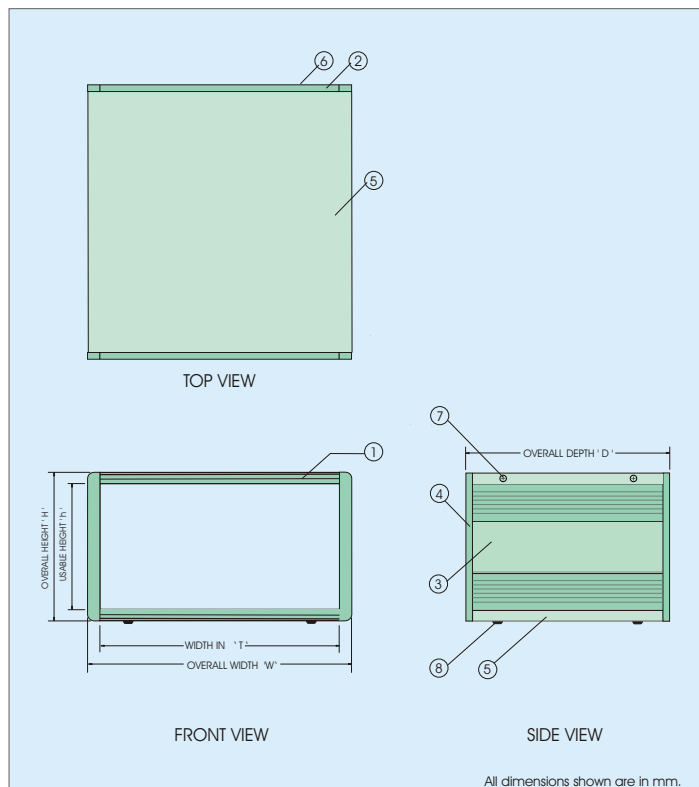
Heights : 1U, 2U, 3U & 4U  
Widths : 21T, 42T, 63T & 84T  
Depths : 185, 245, 305 & 365mm

## Material and Finish

- Frame constructed from aluminium extrusions, panels made from aluminium sheets.
- Choice of anodising or powder coating for the frames. Panels are normally powder coated only.

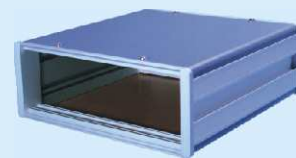
## Optional Accessories

- Pull-Out Handles
- Front Panel - Sliding or Screw-On
- Choice of colour shades
- 19" Rack-Mount kits



## Scope of Supply

No.	Description	Qty
1	Front Profile	2
2	Rear Profile	2
3	Depth Profile	2
4	Height Profile	4
5	Cover, Top / Bottom	2
6	Panel, Rear Screw-On	1
7	Hardware set	1
8	Bump-on Feet Big	4



## Dimensions

	Height		Width	
	Overall	Usable	Overall	Usable
1U	43.6	23.6	21T	128.7
2U	88.1	68.1	42T	235.4
3U	132.5	112.5	63T	342.0
4U	177.0	157.0	84T	448.7

	Depth	
	Overall	Usable
	185.0	173.0
	245.0	233.0
	305.0	293.0
	365.0	353.0

## Ordering Information

Height 'U'	Width 'T'	Depth			
		185mm	245mm	305mm	365mm
1U	21T	42-2110	42-2120	42-2130	42-2140
	42T	42-4110	42-4120	42-4130	42-4140
	63T	42-5110	42-5120	42-5130	42-5140
	84T	42-7110	42-7120	42-7130	42-7140
2U	21T	42-2210	42-2220	42-2230	42-2240
	42T	42-4210	42-4220	42-4230	42-4240
	63T	42-5210	42-5220	42-5230	42-5240
	84T	42-7210	42-7220	42-7230	42-7240
3U	21T	42-2310	42-2320	42-2330	42-2340
	42T	42-4310	42-4320	42-4330	42-4340
	63T	42-5310	42-5320	42-5330	42-5340
	84T	42-7310	42-7320	42-7330	42-7340
4U	21T	42-2410	42-2420	42-2430	42-2440
	42T	42-4410	42-4420	42-4430	42-4440
	63T	42-5410	42-5420	42-5430	42-5440
	84T	42-7410	42-7420	42-7430	42-7440

42 - ABCO - XY

### VENTING DETAILS

- X = 0 No Ventilation Slots
- = 1 Venting on Top Cover only
  - = 2 Venting on Bottom Cover only
  - = 3 Venting on Top & Bottom Cover only
  - = 9 Special - Details required

### COLOUR SHADES

- Y = 1 Black Texture
- = 2 PS Blue Texture
  - = 4 Siemens Grey Texture
  - = 5 Light Grey Texture, RAL 7035
  - = 9 Special

**EXAMPLE :** 42-4220-32 specifies a case of 42 T width, 2U height, 245mm depth, with top & bottom covers having ventilation slots and PS Blue texture.

## Accessories for S-42 Cases

**Front Panels :** These are made of 2.5mm thick Aluminium sheets and are supplied in natural alodine shade

Height 'U'	Width			
	21T	42T	63T	84T
1U	49-1612-1	49-1614-1	49-1615-1	49-1617-1
2U	49-1622-1	49-1624-1	49-1625-1	49-1627-1
3U	49-1632-1	49-1634-1	49-1635-1	49-1637-1
4U	49-1642-1	49-1644-1	49-1645-1	49-1647-1

### Rack Mount Kits

Rack Mount Kit, 1U / 84T	42-9101
Rack Mount Kit, 2U / 84T	42-9102
Rack Mount Kit, 3U / 84T	42-9103
Rack Mount Kit, 4U / 84T	42-9104

For other Accessories please refer to the Card Frame Accessories